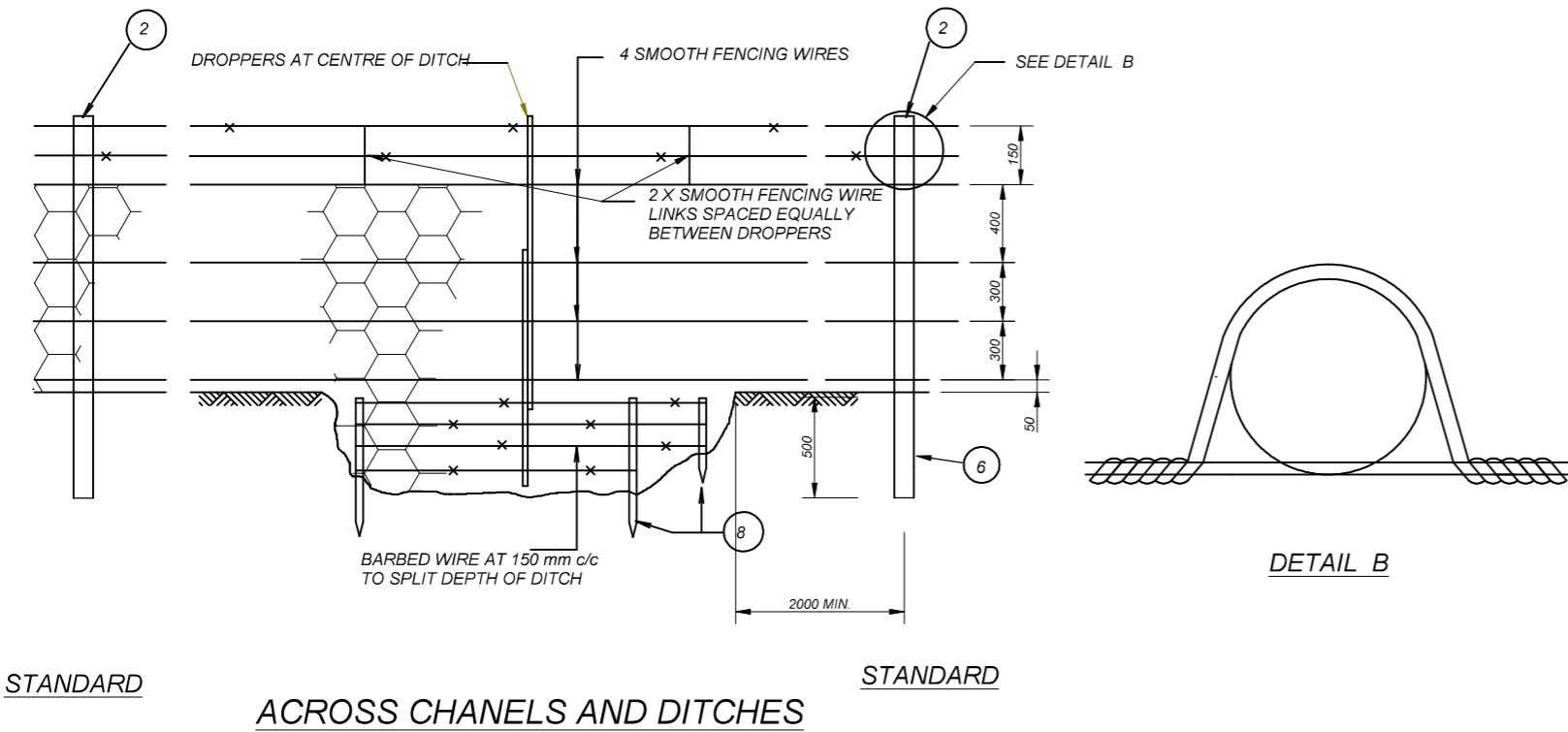


GENERAL DETAILS OF FENCING



LEGEND

- 1 — 125 - 150 mm TOP DIAMETER TREATED TIMBER POLE 2100 mm LONG
- 2 — 100 - 125 mm TOP DIAMETER TREATED TIMBER POLE 1850 mm LONG OR 2,5 kg/m Y STEEL STANDARD
- 3 — DOUBLE TWISTED 4 mm ANCHOR WIRE STRAPS
- 4 — ANCHOR POST. 100 - 125 mm TOP DIAMETER TREATED TIMBER POLE APPROX. A850 mm LONG SEE DETAIL A
- 5 — CORNER AND STRAINING POSTS PLACED IN WELL COMPACTED IN-SITO MATERIAL
- 6 — LINE POSTS AT 3m SPACING, PLACED IN WELL COMPACTED SOIL.
- 7 — NATURAL GROUND LEVEL AT FOOT OF FENCE TO BE PACKED WITH STONE
- 8 — STAKES (DROPPER PROFILE) OF SUITABLE LENGTH DRIVEN INTO SIDES & BED OF TRENCH AT APPROVED SPACINGS AND TIED TO AT LEAST TWO FENCE WIRES. STAKES TO BE ALIGNED WITH & TIED TO DROPPERS WITH WIRE WHERE REQUIRED.
- 9 — LINE POSTS AT 3m SPACING, PLACED IN WELL COMPACTED SOIL.
- 10 — 75 mm HEXAGONAL WIRE NETTING OF 1,8 mm DIAMETER GALVANIZED MILD STEEL 1200 mm WIDE

NGL — NATURAL GROUND LEVEL

NOTES:

1. NOTCHES REQUIRED FOR CORNER POSTS, STRAINING POSTS, STANDARDS AND DROPPERS
2. THIS DRAWING IS TO BE READ IN CONJUNCTION WITH THE PROJECT PARTICULAR SPECIFICATIONS FOR FENCES

NO.	SPECIAL NOTES:	S KONDLO (CHIEF ENGINEER)	DEPARTMENT OF RURAL DEVELOPMENT AND AGRARIAN REFORM PROVINCE OF THE EASTERN CAPE	MULTIPURPOSE SHED	SCALE	INDEX NO.
					NTS	SCMM-03/33/03
		OCTOBER 2024 (DATE APPROVED)	ENGINEERING SERVICES PRIVATE BAG X015 DOHNE ADI STUTTERHEIM 4930	FENCE	A3 ORIGINAL	PLAN NO. SHEET 6 OF 7